



This well presented three bedroom semi detached property is located within the popular development of Queens Crescent. The property offers a good degree of flexibility with the prospect of extending a real possibility subject to a successful planning application. The accomodation is based around an entrance hall with doors leading to a cloakroom, lounge/dining room and kitchen. The landing leads to all three bedrooms and the family bathroom. Externally the property sits within a good size established plot with well maintained front and rear gardens along with a single garage and driveway parking for two cars.

Viewing

Viewings Strictly by appointment with the sole selling agents Atwell Martin call or e-mail us today to confirm your appointment | 65 New Road, Chippenham, Wiltshire SN15 1ES

Situation - Chippenham

Chippenham has a wide range of amenities to include High Street retailers plus supermarkets and retail parks and, in addition, there is a leisure centre with indoor swimming pool, library, cinema and public parks. Chippenham also benefits from excellent schooling with numerous primary and three highly sought after secondary schools. For those wishing to commute there is also a regular main line rail service from Chippenham station to London (Paddington) and

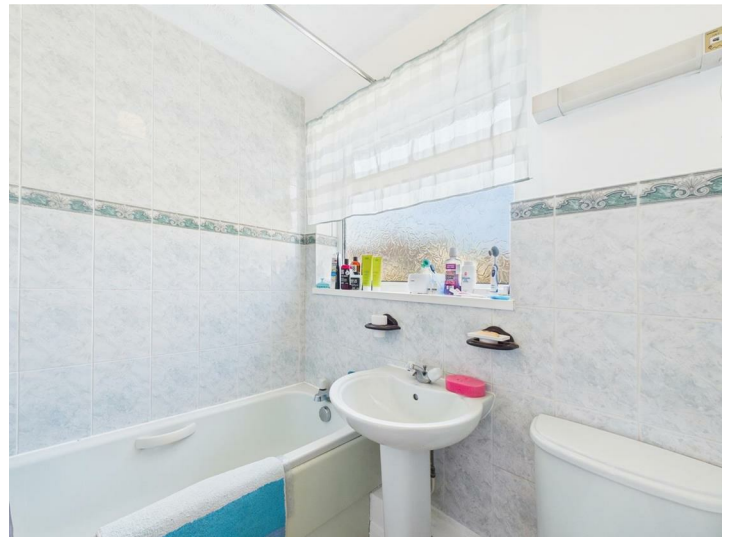
the West Country and the M4 motorway is easily accessed via Junction 17 a few miles north of the town.

Property Information

Utilities/Services - Mains Electric, Water & Drainage, Gas Central Heating

Wiltshire Council Tax - Band C

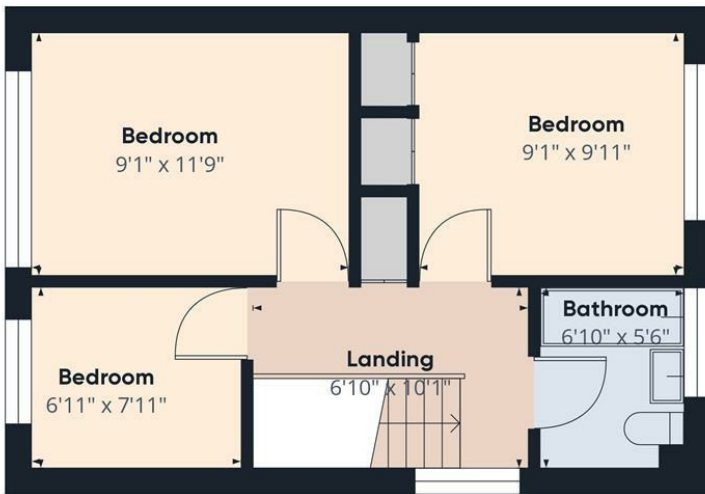
Tenure - Freehold







Ground Floor



Floor 1

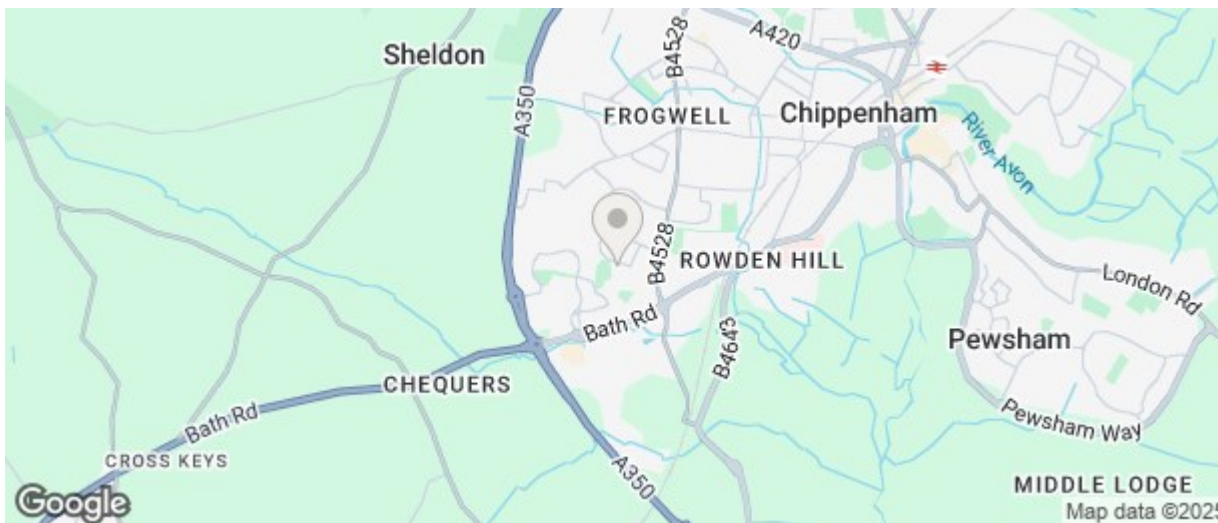
Approximate total area[®]
732.69 ft²

(1) Excluding balconies and terraces.

While every attempt has been made to ensure accuracy, all measurements are approximate, not to scale. This floor plan is for illustrative purposes only.

Calculations are based on RICS IPMS 3C standard.

GIRAFFE360



Energy Efficiency Rating		
	Current	Potential
Very energy efficient - lower running costs		
(92 plus) A		
(81-91) B		
(69-80) C		
(55-68) D		
(39-54) E		
(21-38) F		
(1-20) G		
Not energy efficient - higher running costs		
	56	83
England & Wales EU Directive 2002/91/EC		
Environmental Impact (CO ₂) Rating		
	Current	Potential
Very environmentally friendly - lower CO ₂ emissions		
(92 plus) A		
(81-91) B		
(69-80) C		
(55-68) D		
(39-54) E		
(21-38) F		
(1-20) G		
Not environmentally friendly - higher CO ₂ emissions		
England & Wales EU Directive 2002/91/EC		

The particulars are set out as a general outline only for the guidance of intended purchasers or lessees, and do not constitute, any part of a contract. Nothing in these particulars shall be deemed to be a statement that the property is in good structural condition or otherwise nor that any of the services, appliances, equipment or facilities are in good working order. Purchasers should satisfy themselves of this prior to purchasing